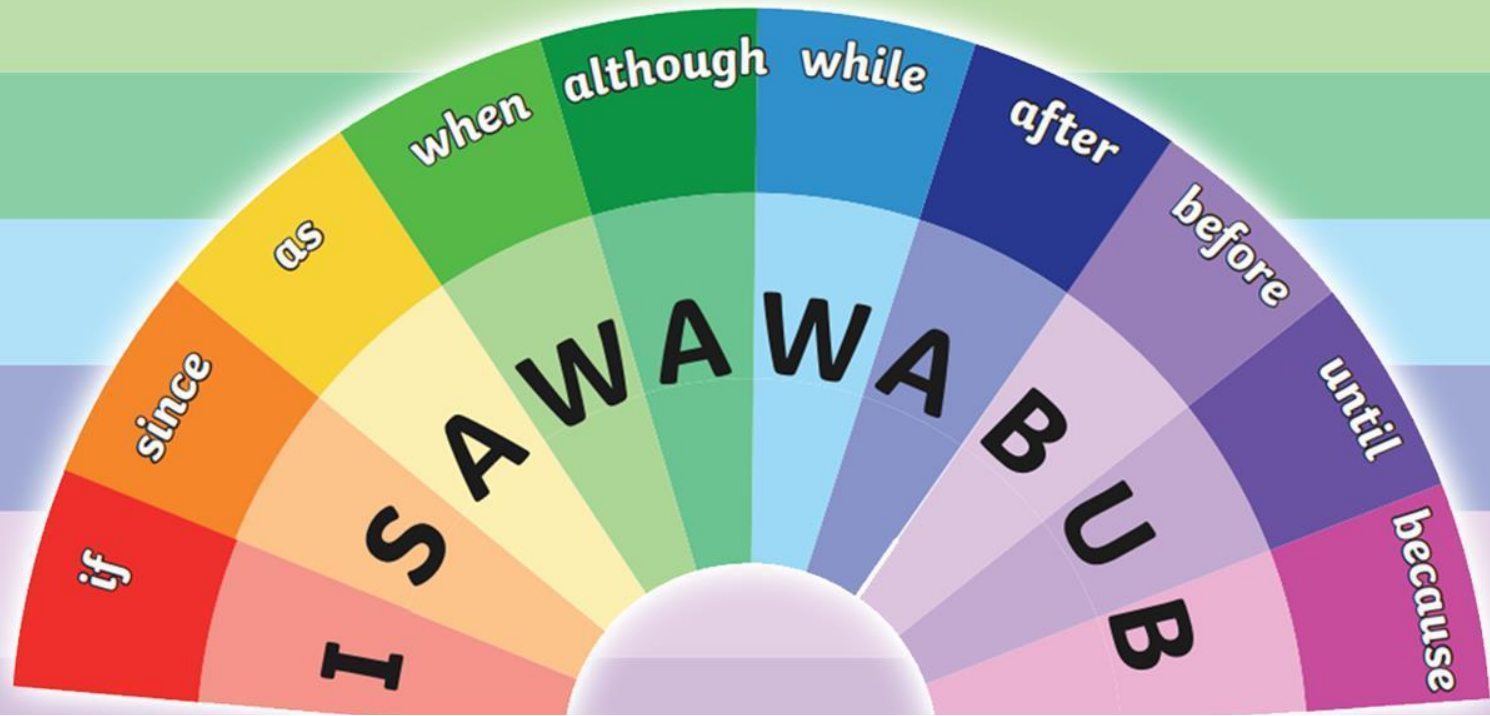


I SAW A WABUB

Subordinating Conjunctions



Aim

- We are learning about subordinating conjunctions.

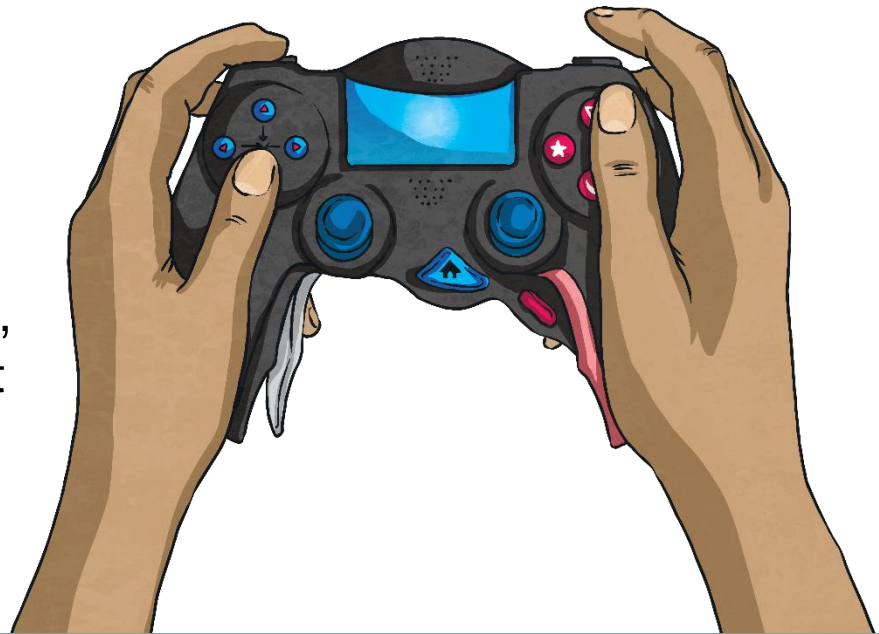
Success Criteria

- I can name and explain different subordinating conjunctions in the acronym I SAW A WABUB.

What are subordinating conjunctions?

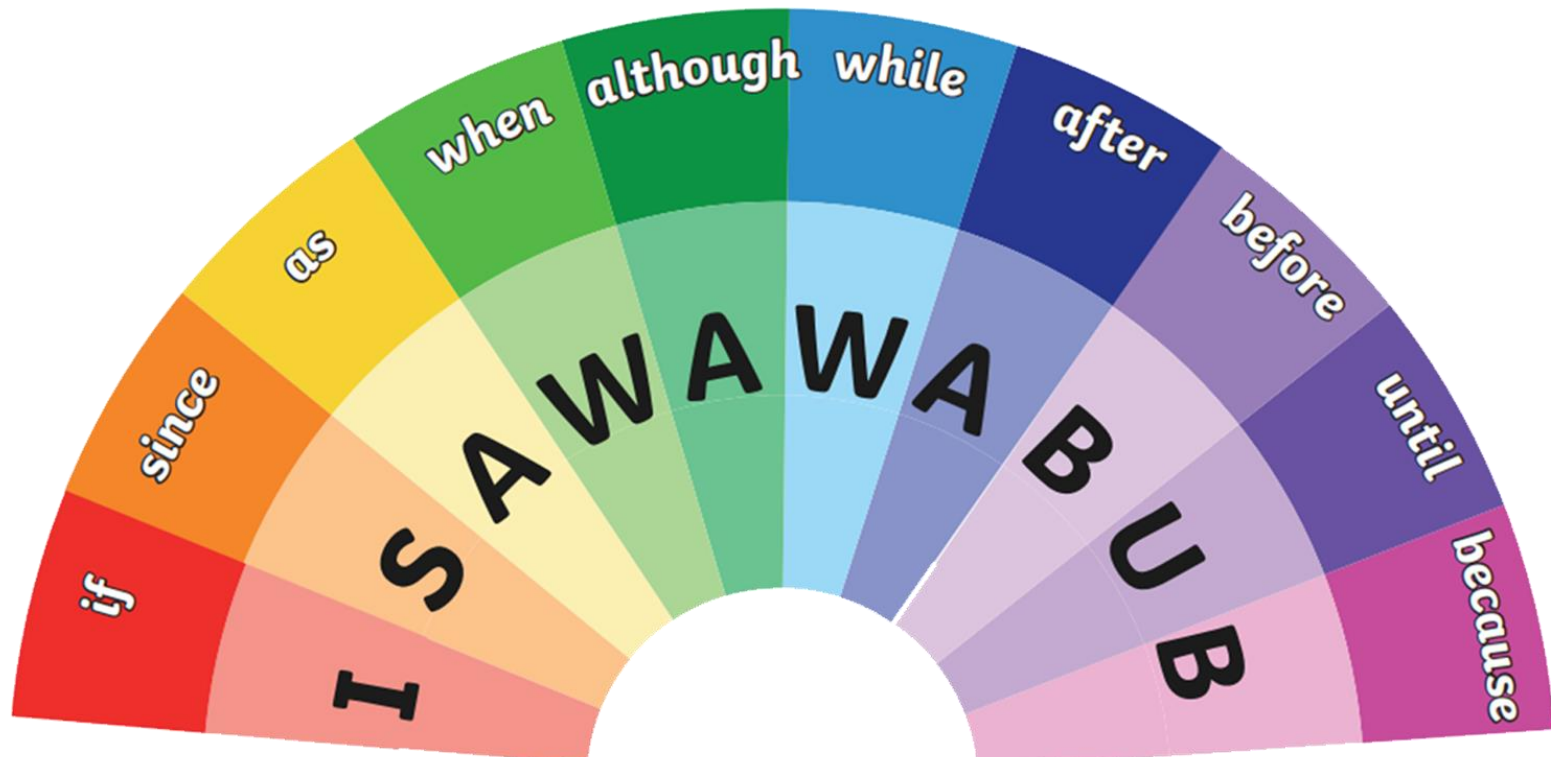
Subordinating conjunctions are words that are used to link dependent and independent clauses in complex sentences.

In the complex sentence below, an independent and dependent clause have been joined together with the subordinating conjunction 'after'.



After walking home from school, I played my favourite video game.

What is I SAW A WABUB?



I SAW A WABUB is an acronym used to help us remember the ten subordinating conjunctions used in the English language.

If

The word 'if' gives rules or conditions for the main clause.

e.g.

If you eat all of your vegetables, you can have ice-cream for dessert.



Sinc

e

‘**Since**’ is a cause conjunction. This means it helps to explain a reason something is happening.

e.g.

We cannot play on the tennis court **since** it is covered in puddles.

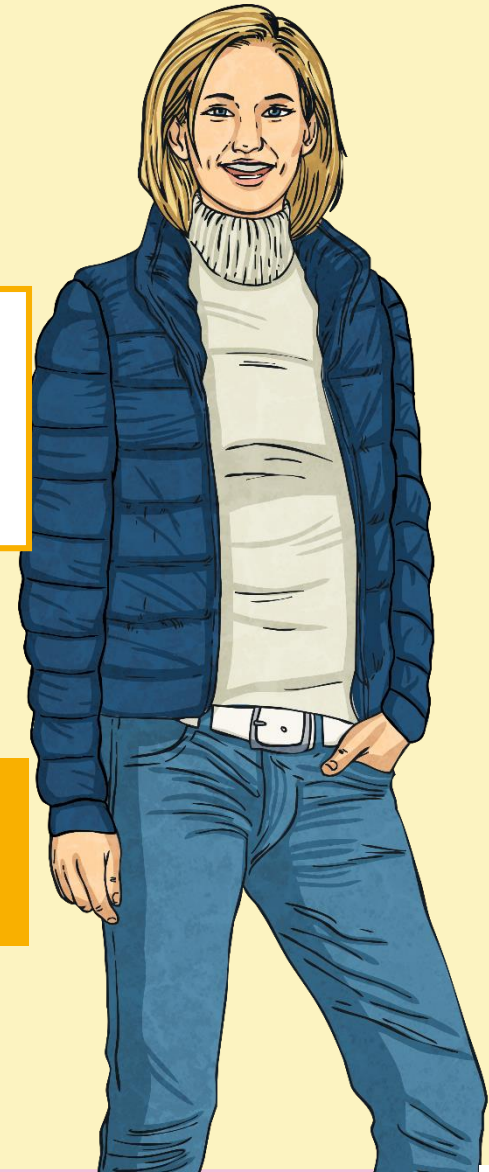


As

Similar to the word 'since', '**as**' is used to give a reason for something happening.

e.g.

As it was a cold day, I wore a thick jacket.



Whe

n

The word '**when**' helps give a sense of time for the main clause.

e.g.

When we got to the train station, I sat on the bench.



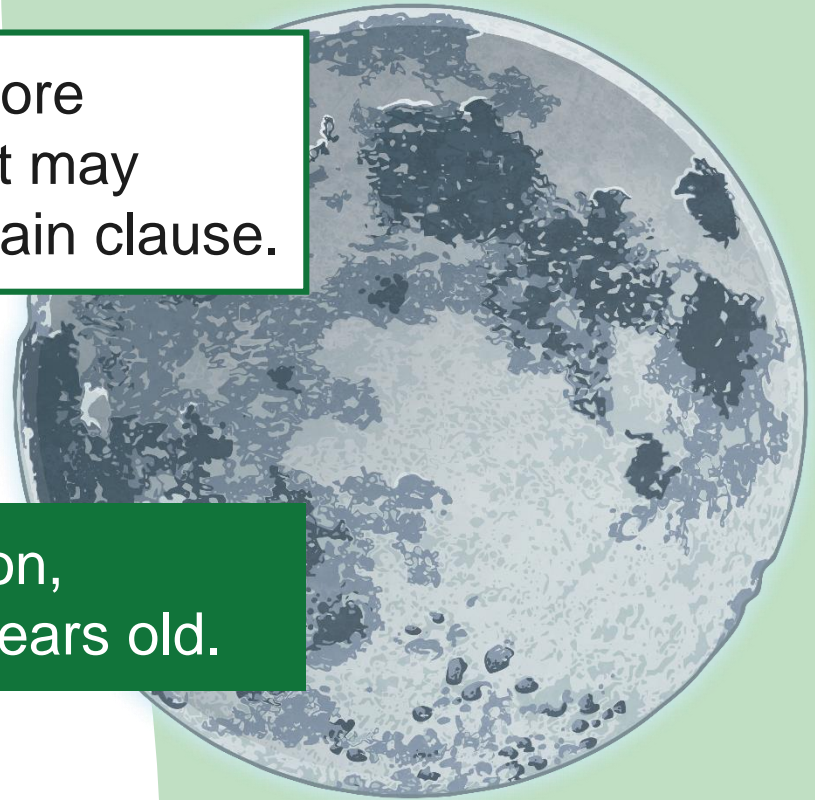
Althoug

h

The word '**although**' gives more information to a sentence that may change the meaning of the main clause.

e.g.

Bella wanted to go to the moon,
although she was only five years old.



While

'While' is a time related word that gives an idea of when the action in the sentence is occurring. It usually does this by comparing two different situations.

e.g.

While we waited for the movie to begin, we bought popcorn.



After

'After' is also a conjunction related to time. It is used to give a sequence of events.

e.g.

After I finished the race, I drank an entire bottle of water.



Before

e

The word '**before**' is another time related word. It is used to explain a sequence of events.

e.g.

We visited the park **before** we went to the shops.



Until

'Until', like the previous conjunctions, is also a time related word. It usually indicates a change from one situation to another.

e.g.

I watered the plant **until** the soil was soaking wet.



Because

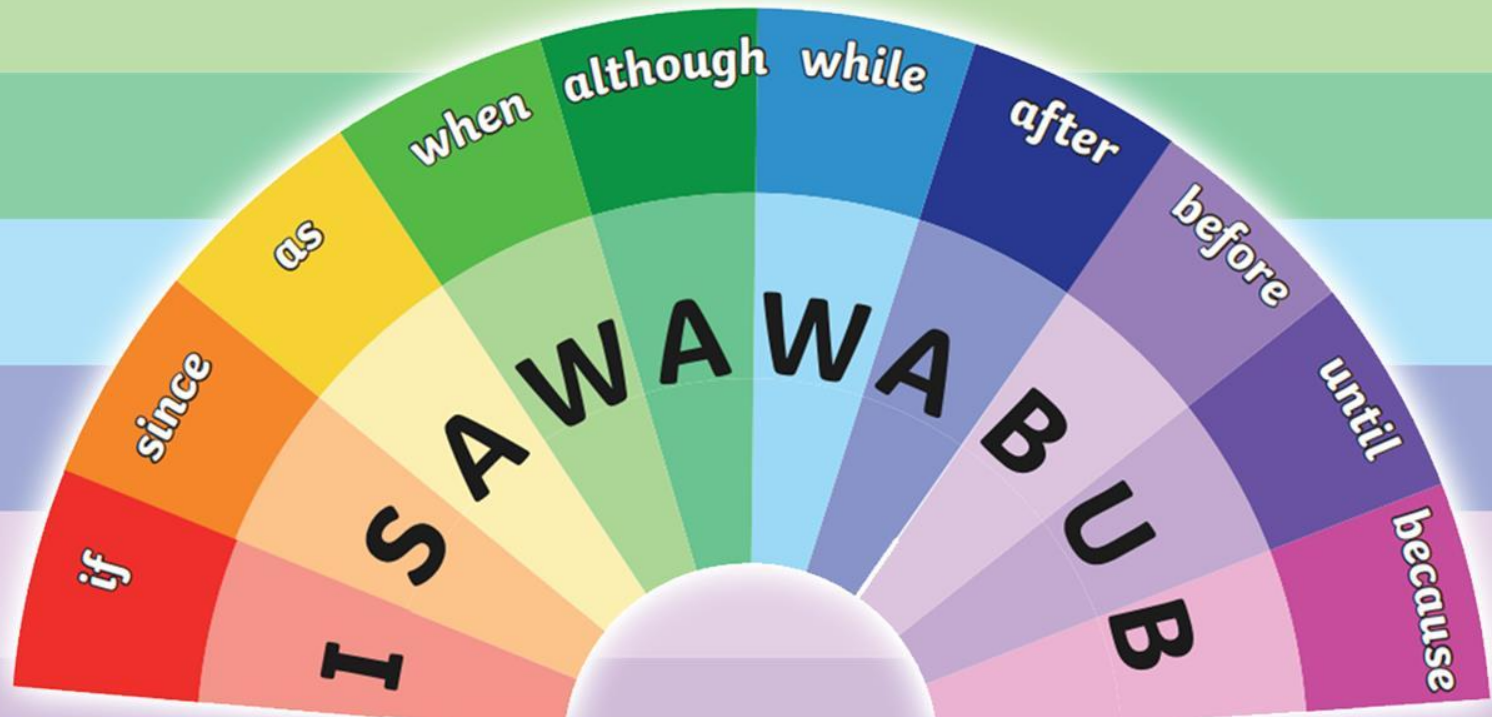
e

The word '**because**' gives reasons for an event or situation happening in the sentence.

e.g.

I had nothing to eat at school break **because** I ate all my food at first break.





if

since

as

when

although

while

after

before

until

because

I

S

A

W

A

W

A

B

U

B